

JAN 10 - 16, 2022

The Long Island City luxury real estate market, defined as all properties priced \$1M and above, saw 5 contracts signed this week, made up of 5 condos. The previous week saw 4 deals. For more information or data, please reach out to a Compass agent.

\$1,328,607

Average Asking Price

\$1,315,000

Median Asking Price

\$1,377

Average PPSF

4%

Average Discount

\$6,643,035

Total Volume

188

Average Days On Market

Unit 5008 at Skyline Tower, located at 3 Court Square in Hunters Points, entered contract this week, with a last asking price of \$1,548,120. Built in 2019, this condo spans 964 square feet with 2 beds and 2 full baths. It features white oak engineered floors throughout, a double exposure living room with oversized windows, an L-shaped kitchen with abundant cabinet space and a top-of-the-line appliance package, a spa-inspired primary bathroom with porcelain tile, and much more. The building provides a state-of-the-art fitness center, a spa and steam room, a business center, parking, and many other amenities.

Also signed this week was Unit 408 at Skyline Tower, located at 3 Court Square in Hunters Point, with a last asking price of \$1,349,852. This condo spans 994 square feet with 2 beds and 2 full baths. It features white oak engineered floors throughout, an open kitchen with large island, panoramic views, ample closet space with built-in shelving and storage, a spa-like primary bath, and much more.

5

Condo Deal(s)

0

Co-op Deal(s)

0

Townhouse Deal(s)

\$1,328,607

Average Asking Price

\$0

Average Asking Price

\$0

Average Asking Price

\$1,315,000

Median Asking Price

\$0

Median Asking Price

\$0

Median Asking Price

\$1,377

Average PPSF

N/A

Average PPSF

\$0

Average PPSF

1,023

Average SqFt

N/A

Average SqFt

0

Average SqFt



SKYLINE TOWER (3 CT SQ) # 5008

Hunters Point

Type	Condo	Status	Contract
SqFt	964	Beds	2
PPSF	\$1,606	Fees	\$1,379

Ask	\$1,548,120
Baths	2
DOM	N/A

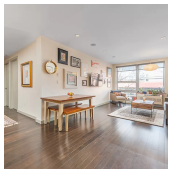


SKYLINE TOWER (3 CT SQ) # 408

Hunters Point

Type	Condo	Status	Contract
SqFt	994	Beds	2
PPSF	\$1,358	Fees	\$1,421

Ask	\$1,349,852
Baths	2
DOM	N/A

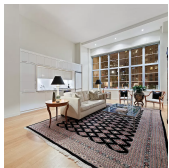


CASA VIZAYA (10-40 46 RD) # 2F

Hunters Point

Type	Condo	Status	Contract
SqFt	1,144	Beds	2
PPSF	\$1,150	Fees	\$1,124

Ask	\$1,315,000
Baths	2
DOM	70

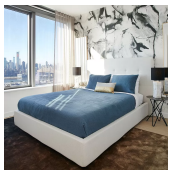


**ARRIS LOFTS (27-28 THOMPSON AVE)
248**

Hunters Point

Type	Condo	Status	Contract
SqFt	1,387	Beds	N/A
PPSF	\$920	Fees	\$1,319

Ask	\$1,275,000
Baths	1
DOM	306



SKYLINE TOWER (3 CT SQ) # 3109

Hunters Point

Type	Condo	Status	Contract
SqFt	625	Beds	1
PPSF	\$1,849	Fees	\$894

Ask	\$1,155,063
Baths	1
DOM	N/A

Compass is a licensed real estate broker and abides by Equal Housing Opportunity laws. All material presented herein is intended for informational purposes only. Information is compiled from sources deemed reliable but is subject to errors, omissions, changes in price, condition, sale, or withdrawal without notice. No statement is made as to the accuracy of any description. All measurements and square footages are approximate. This is not intended to solicit property already listed. Nothing herein shall be construed as legal, accounting or other professional advice outside the realm of real estate brokerage.